



CHESTER ROAD

Baptist Church



Information Pack

Children's & Families Worker

Chester Road Baptist Church, Chester Road, Sutton Coldfield, West Midlands, B73 5HU
☎ 0121 350 2779 ✉ office@ChesterRoadBC.org.uk 🌐 www.ChesterRoadBaptist.org.uk

Chester Road Baptist Church is a Registered Charity (No 1134180) and a member of the Baptist Union of Great Britain



CHESTER ROAD

Baptist Church

Dear Enquirer!

We're so pleased you're open to exploring a role with us!

This is an exciting time for us as church. Together, we are embarking on a journey, discovering a renewed sense of mission and ministry. We're a 'work-in-progress'! (Aren't we all?)

Having worked collaboratively to refresh our vision, mission, values, and goals, we're now looking for the *right* people to help us get there. We are recruiting an additional 2.5 Full-Time Equivalent workers. With 5+ years funding already in place, we're investing in our mission and ministry.

This post of **Children's and Families Worker** is vital and new for us. Following Jesus' clear example (Matthew 19:14), we're on a mission to join Him in proactively welcoming and nurturing the faith of children and their parents/ carers; growing community with 0-11s. We recognise we've got much to do!

It's more important that we hire the *right* person than fill a role. That means, by mutual agreement, for the *right* person there is scope to shape the role. Full-time or part-time? Proven experience or potential? We appreciate it's equally important you find the *right* church and role to excel in.

As well as the Job Description and Person Specification, the *right* person will:

- ☐ Have a strong Christian faith, open and inclusive in heart and action.
- ☐ Have a pioneering spirit, energised by the opportunity to grow something from small beginnings.
- ☐ Be a 'people person' that children love to be around and parents/ carers have confidence in.
- ☐ Bring creativity, energy, fun, and a passion for nurturing age-appropriate Christian faith.

There is huge potential here: the size of our vision, ambition, population, facilities... We're starting to see some 'first fruits'. Could you be the *right* person to work as part of our team to lead us forward with children and families? Could we be the *right* church for you to excel in your God-given gifts and passion?

If you want a natter before deciding whether to explore this more formally, please contact me!

Danny Brierley

e: DannyBrierley@ChesterRoadBC.org.uk

m: 07840 046020



Danny Brierley
Minister

Chester Road Baptist Church, Chester Road, Sutton Coldfield, West Midlands, B73 5HU
☎ 0121 350 2779 ✉ office@ChesterRoadBC.org.uk 🌐 www.ChesterRoadBaptist.org.uk

Chester Road Baptist Church is a Registered Charity (No 1134180) and a member of the Baptist Union of Great Britain

Church Profile

You'll get a flavour of us from our website and social media:



ChesterRoadBaptist.org.uk



[/ChesterRoadBaptist](https://www.facebook.com/ChesterRoadBaptist)



[@ChesterRoad](https://twitter.com/ChesterRoad)

Chester Road Baptist Church was founded in 1905. With a strong heritage, we recognised we were becoming an ageing congregation, with a high proportion in retirement and few younger families.

Danny Brierley, our Minister, joined us in March 2018 and, it's fair to say, this is a new and exciting chapter in the life of our church. We are going through an extensive process of refreshing. We currently have an adult membership of 102. This has grown 16% in the last 18 months. We've made a start but have a lot more to do. (Won't we always?)



Excitingly, we are becoming a more ethnically diverse church. Currently 25% of our adult membership and 28% of our regular attenders are from black and minority ethnic (BAME) heritages.

As a membership, we have committed to being an inter-generational church, hence the bold decision to invest significantly in children & families, young people & young adults, and seniors.



At the 10.30 am service we are experimenting with a more informal and contemporary style of worship (Bethel, Hillsong, Soul Survivor...).

Once again, a start! We're all together for 20

mins, then age-specific programmes. Once a month we're all-age. The 6.30 pm service retains a more traditional feel with a mix of classic hymns, readings, intercessions, and an expository sermon. Every Wednesday at 11.30 am we have Midweek Communion, with liturgy, readings and prayer. Sacred space! Then there's Messy Church (see below)



Do you see our potential and catch our vision for the mission and ministry God has given us? It's bold!

Of course, you wouldn't be alone. Danny Brierley, our Minister, has a background with young people and children, having previously been Head of Youth Services for Oasis UK, Youth and Children's Minister at Altrincham Baptist, and Operations Minister for a community-engaged church. You'll also work alongside some fabulous new colleagues (being recruited now!), and, crucially, you'll find very committed volunteers.



We have spacious facilities. Our main church can seat 200 and we have two additional halls and a number of meeting rooms, offices, and kitchen. Buildings alone don't attract seekers, believers attract seekers, hence we are prioritising people. Being on the A452 Chester Road, we are a local landmark building.

Chester Road Baptist Church is an active member of the Heart of England Baptist Association (HEBA). Because of our location, we're also members of both Churches Together in Erdington and Churches Together in Banners Gate, Boldmere and Wylde Green.



Chester Road Baptist Church, Chester Road, Sutton Coldfield, West Midlands, B73 5HU
☎ 0121 350 2779 ✉ office@ChesterRoadBC.org.uk 🌐 www.ChesterRoadBaptist.org.uk

Chester Road Baptist Church is a Registered Charity (No 1134180) and a member of the Baptist Union of Great Britain

Our Vision:

[This is what we are working to achieve. It's what, by faith and endeavour, we hope for.]

To see God's Kingdom come and His will done in Sutton Coldfield, north Birmingham, and beyond, as it is in Heaven.

Our Mission:

[This is what we need to do to achieve our vision.]

Growing community! Working with others to enable everyone within five miles and beyond of Chester Road Baptist to become disciples of Christ.

There are two equally important and inter-linked parts to this:

1. To enable 'non-believers' to become 'believers' in Christ (mission).
2. To enable 'believers' to become 'disciples' of Christ (discipleship).



Our Values:

[This is how we will be and go about our mission.]

Intimacy

- a. We develop intimacy with God through honest engagement with the Bible, worship, prayer, and right living.
- b. We respect that people respond to God at different times and in different ways.
- c. It is intimacy with God that shapes the rest of our values.

Inclusive

- a. We strive to be as welcoming, generous and life-changing as Jesus Christ.
- b. Because God is Love, we welcome all those we meet, whatever their story, beliefs or lifestyle (without undermining safeguarding responsibilities).
- c. We champion all, regardless of age, ethnicity, gender, physical ability, religion, or sexual orientation.

Involved

- a. Inspired by Jesus Christ, we strive to meet peoples' physical, social, emotional and spiritual needs.
- b. We enable people to use their God-given gifts and talents to serve in and beyond the church.
- c. Our involvement is demonstrated through regular participation in worship, small groups, prayer, serving (volunteering), telling others, giving, and church membership.

Intergenerational

- a. We seek to be a growing community of people drawn from all ages and stages of life: early years (babies/toddlers); children; young people; young adults; mid-life adults; retired, fit and actives; seniors.
- b. We recognise that each stage of life has different needs and perspectives on what it means to live Christian faith, and so benefit from age-specific ministry.
- c. We discover a bigger, deeper, more vivid understanding of God when the generations come together to learn from each other in age-inclusive ministry.

Interdependent

- a. We rejoice that relationships are at the heart of God, Father, Son and Holy Spirit, and seek to live openly and honestly with one another.
- b. We are just one of many vibrant churches in the Sutton Coldfield/ north Birmingham area and celebrate being part of the 'body of Christ', uniting us with churches near and far.
- c. We work in partnership with others, both Christian and statutory/voluntary agencies, to bring about social and spiritual transformation in the Sutton Coldfield/ north Birmingham area and beyond.

Impact

- a. Jesus made a big and profoundly positive impact on people, spiritually, emotionally and physically. We should expect, and look to make - positive impact on people's lives for Christ.
- b. Today, we continue to pray for the Holy Spirit's supernatural intervention, encourage each other to grow in our journey towards Christ, and strive to make a positive impact in Sutton Coldfield/ north Birmingham area and beyond.
- c. Being good stewards of God's earth and resources, we prioritise what makes most impact, whilst minimising our environmental footprint.

Chester Road Baptist Church, Chester Road, Sutton Coldfield, West Midlands, B73 5HU

☎ 0121 350 2779 ✉ office@ChesterRoadBC.org.uk 🌐 www.ChesterRoadBaptist.org.uk

Chester Road Baptist Church is a Registered Charity (No 1134180) and a member of the Baptist Union of Great Britain

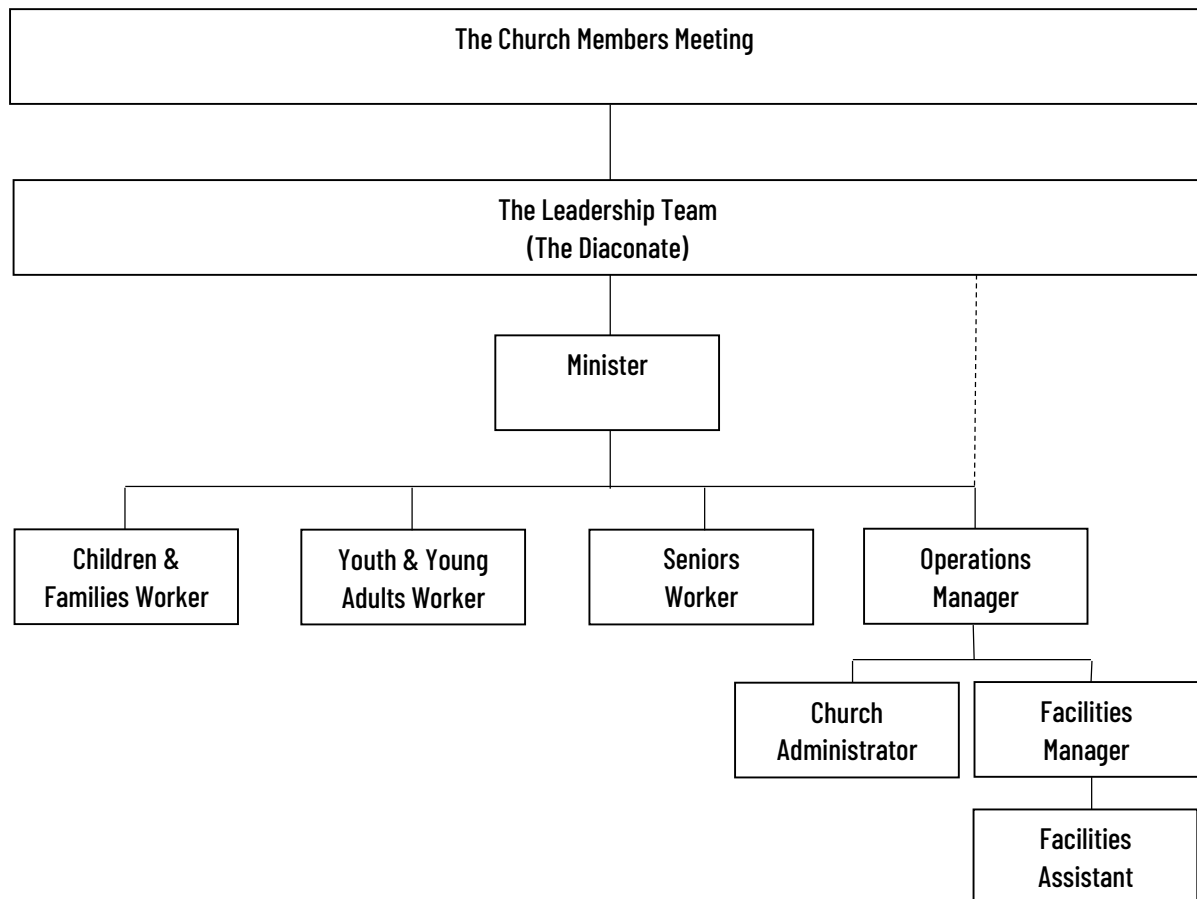
Here's a summary of our current mission and ministry as a church:

Fellowship	Hospitality - Sunday Refreshments - Catering	Seniors Ministry - One-to-One lunch - Tuesday Club	Women's Ministry - Breakaway - Small group	Men's Ministry <i>(aspiration)</i>	Sports Ministry - Chester Road Cyclists	Café <i>(aspiration)</i>
Worship	iGather (services) - 10.30 am - 6.30 pm - Midweek Communion	Service leaders & speakers	Worship - musicians - singers	Technical Team - sound - visuals	Special services - dedications - weddings - funerals	
Mission	Alpha	Guest services/ events - Christmas - Easter - Remembrance	Care ministries - Job Club - Bereavement Group <i>(aspiration)</i>	Missional Communities - Chester Road Cyclists - Tuesday Club	- iTell - Talking Jesus	'..And Beyond' - Home Mission - BMS World Mission
Discipleship	iConnect (small groups)	iPray - Early Bird - Higher	iServe (volunteering)	iGive (stewardship)	iBelong - new comers - baptism - membership	- Higher - Wider - Deeper
Pastoral	Hosts (welcome) Team	Prayer Response	Pastoral Visitors <i>(aspiration)</i> <i>Pastoral care happening but inconsistent</i>			
Next Generation	Junior Church - Crèche - Junior Church	Brigades 5-11s - Anchors - Juniors	Messy Church			
	Sunday Youth	Brigades 11-18s - Company - Seniors - Amicus				
Enabling	Facilities	Finance	HR	Risk & Strategy	Safeguarding	IT
	Office	Comms & Promotion	External Hirers			

Delegated authority

Being Baptist, we are 'congregational' in our understanding of church. You don't have to be from a Baptist church to join our team but it's important you understand and can actively support our Baptist ethos.

- Church Members are those who have committed together to live as disciples of Christ, and to play their part in the church's mission and ministry.
- The Church Meeting is where Church Members come together to discern the mind of Christ – *God's* will, not our own. At its best, it involves prayer, prophecy, listening, and discernment. It should not primarily be a business meeting.
- Authority ultimately rests with the Church Members Meeting, not with the Deacons, Minister or a 'bishop'. We are 'congregational' and champion the 'priesthood of all believers' [1 Peter 2:5]. Practically, the Church Meeting delegates to the Deacons and Minister and staff team.
- Deacons (leadership team) are Church Members elected by the Church Meeting to serve and enable the church's mission and ministry. They are also our Charity Trustees.



Children's Ministry



Junior Church is provided during the 10.30 am service. The Primary Room has recently been equipped with a ceiling-mounted data projector. There are two larger halls available if and when growth requires it. We currently use Scripture Union curriculum.

We're currently developing a young family-friendly area in the main church to ensure babies, toddlers and their parents/ carers can be present during services. After all, God put the wiggle in kids! In addition, there is also a dedicated crèche room with a lot of potential.

Junior Church is led by a small team of very committed volunteers. We'd want you to lead and support this team. There is great scope to create a strong identity for a reframed children's ministry.



Messy Church meets on the 2nd Saturday of the month for craft, games, Bible story, worship and food. It's staffed by a volunteer team of 10+. If we're honest, it needs a further injection of energy. We'd want you to lead and support this team.



Brigades 5-11s meets on Fridays, 6.00-7.30 pm during term time. Unusually, we run a combined Boys Brigade and Girls Brigade so all are in together. It currently has a membership of 25+, served by a volunteer team of 6. We'd want you to play a key role in the development and delivery, coaching volunteers.



Schools ministry currently amounts to an annual "Bible Exhibition" that uses picture display boards and church volunteers dressed in character to tell the story of Jesus. It's been running for 18 years and continues to draw some schools.

Where do we grow from here?

There is HUGE potential to develop and grow our ministry with, and for, children and families.

Could you bring your experience and creativity, and work with others, to develop a plan that is right-fit for our mission and ministry?

Toddler stay-and-play session(s)?

After School Club?

Holiday Club?

Dance Academy?

These are all *possible*, but what is right for us?

Location

In the West Midlands, you'll find us where Sutton Coldfield and north Birmingham meet. B73 5HU.

We're at the crossroads in so many ways. Though the church building is technically in the Sutton Coldfield ward of Sutton Vesey, as a growing community, we are Erdington as much as Sutton Coldfield. In any case, we're covered by Birmingham City Council.

Fort Dunlop, Jaguar Landrover, Spaghetti Junction, and Star City are all within our 5 mile radius. And so too is the enormous Sutton Park (with its 2,400+ acres of heath, woods, and lakes) and Alexander Stadium (home of the 2022 Commonwealth Games).

We're just 6 miles from the centre of Birmingham, England's second city, home to the CBSO, Custard Factory, Grand Central, Mailbox, extensive canals network, theatres, concert venues, sports stadiums, and major employers like HSBC and HS2.

Chester Road is a station on the Cross-City Line with trains every 10 mins to Birmingham New Street (15 mins), Aston, University of Birmingham, Selly Oak, Redditch and Lichfield. Being within easy reach of the M6, M5, and M42, we're easy to get to from anywhere in the UK.

Birmingham is great for Higher Education: Aston University; Birmingham City University; Newman University; University College Birmingham; University of Birmingham, and still accessible are Coventry, Warwick, Wolverhampton, and Stafford. We're also surrounded by some great primary and secondary schools.

BMS World Mission has its training centre in Birmingham and now, both Spurgeons and Moorlands colleges deliver courses from here too.

In 2015 *The Times* newspaper listed Sutton Coldfield in its top 20 family-friendly places to live in England.

What's not to like?!



"STAND at the crossroads and LOOK; ASK for the ancient paths, ask where the good way is, and WALK in it. And you will find REST for your souls."

Jeremiah 6:16



Process

We're looking to recruit 2.5 Full-Time Equivalent (FTE) additional mission and ministry staff:

1. Children's & Families Worker [full-time or part-time]
2. Youth & Young Adults Worker [full-time or part-time]
3. Seniors Worker [part-time]
4. Operations Manager [part-time]

If you know of people who might be interested in one of these other roles, please direct them to:
ChesterRoadBaptist.org.uk/Jobs

To attract the *right* people we're retaining some flexibility. The final outcome could be 2 full-time and 1 half-time workers, or it might be 1 full-time and three part-time workers. Tell us what you would be looking for.

If you want an informal chat before deciding whether or not to apply, feel free to contact Danny Brierley.

Application deadline: 10th September 2019 midnight e: Office@ChesterRoadBC.org.uk

Likely 1st interview: 26th September 2019

Likely 2nd interview: 12th-13th October or 19th-20th October 2019

Formal decision: 24th October 2019 (Church Members Meeting)

Pray for us as we pray for you!

Chester Road Baptist Church, Chester Road, Sutton Coldfield, West Midlands, B73 5HU
☎ 0121 350 2779 ✉ office@ChesterRoadBC.org.uk 🌐 www.ChesterRoadBaptist.org.uk

Chester Road Baptist Church is a Registered Charity (No 1134180) and a member of the Baptist Union of Great Britain